

Path to COVID-19 vaccination

For Individuals 12
and Older

For questions about the vaccine or to schedule an appointment, please call our vaccine line at 1.844.BSW.VACC.

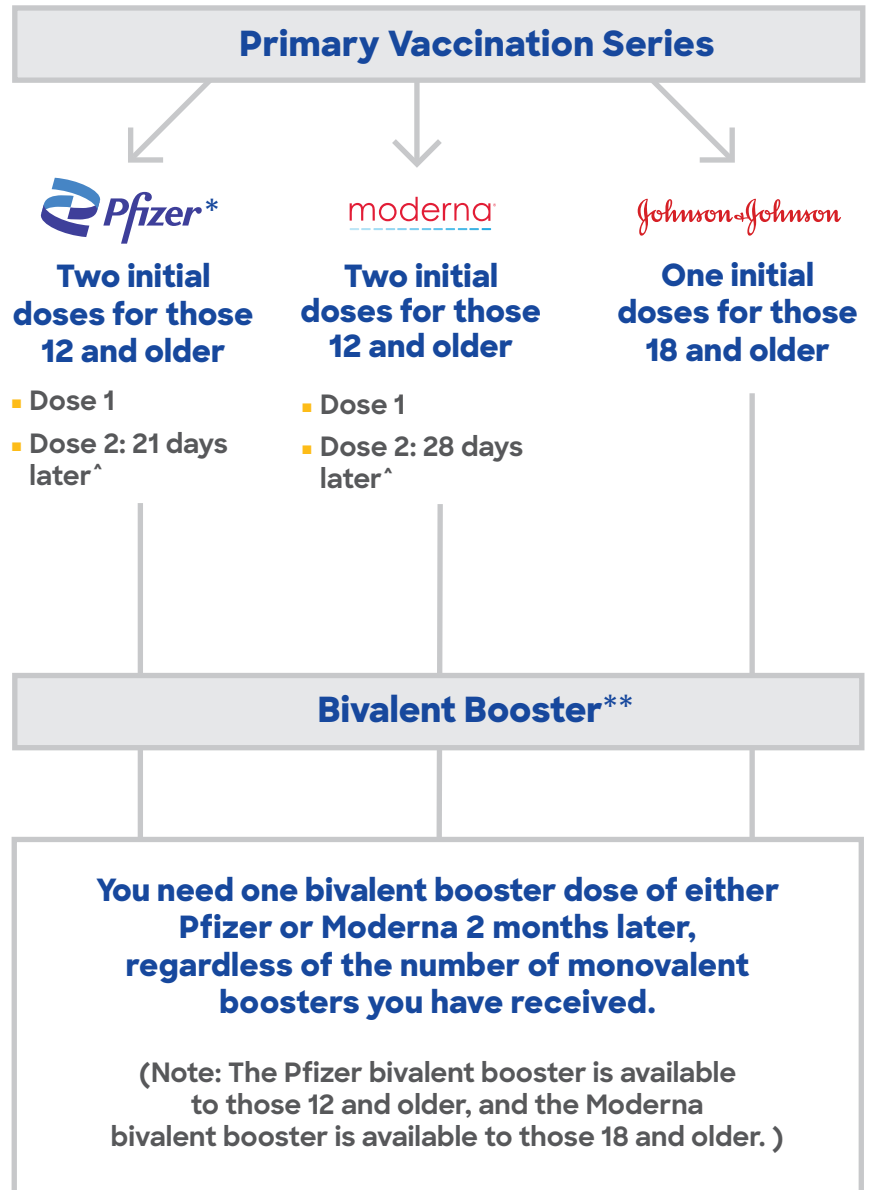
You can also schedule an appointment on MyBSWHealth.com or on the MyBSWHealth app.

Note: The CDC now recommends only receiving mRNA vaccines for additional doses or a booster (Pfizer and Moderna).

*The Pfizer vaccine is currently the only available booster option for those ages 12 to 17.

** A person is considered fully vaccinated after the primary series. However, you are considered up to date on your vaccinations if you receive a booster.

^ An 8-week interval may be optimal for some people ages 12 years and older, especially for males ages 12 to 39 years. A shorter interval (3 weeks for Pfizer-BioNTech; 4 weeks for Moderna) between the first and second doses remains the recommended interval for: people who are moderately or severely immunocompromised; adults ages 65 years and older; and others who need rapid protection due to increased concern about community transmission or risk of severe disease.



Path to COVID-19 vaccination

For Immunocompromised Individuals 12 and Older

For questions about the vaccine or to schedule an appointment, please call our vaccine line at 1.844.BSW.VACC.

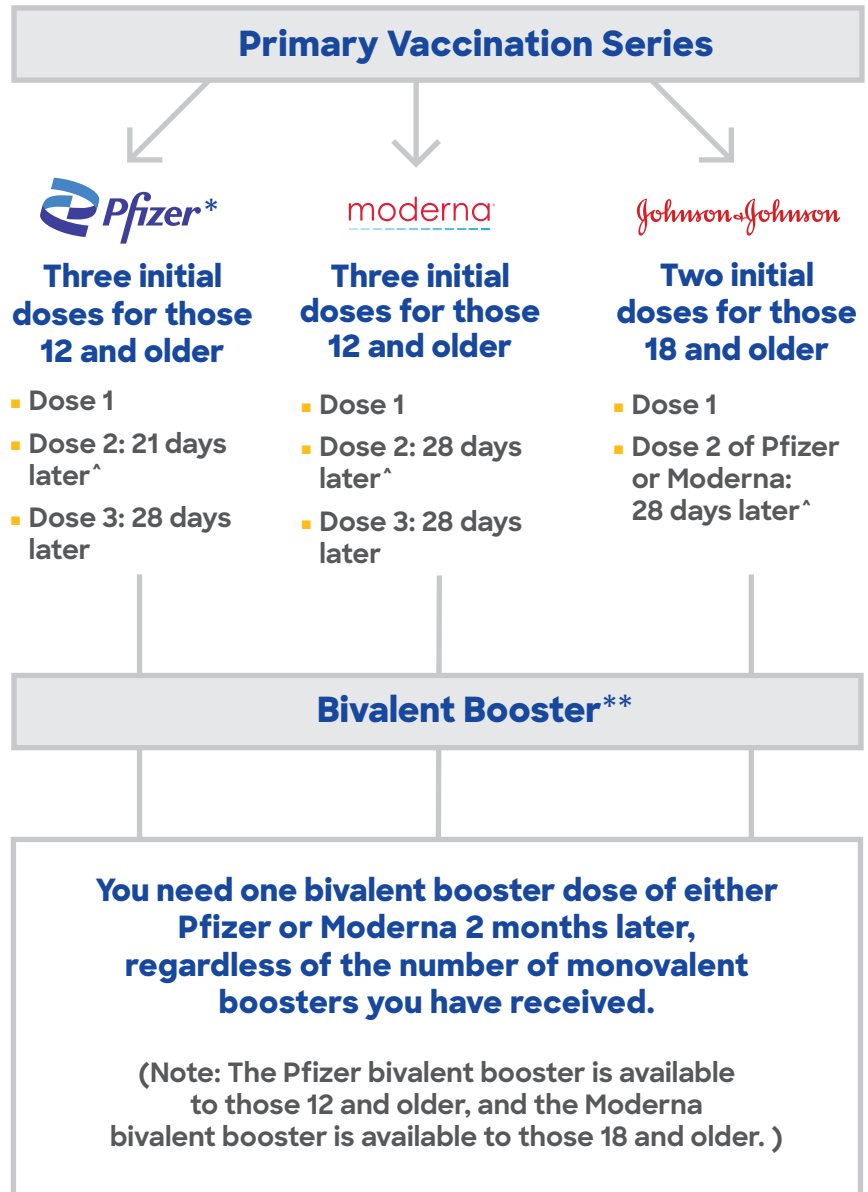
You can also schedule an appointment on MyBSWHealth.com or on the MyBSWHealth app.

Note: The CDC now recommends only receiving mRNA vaccines for additional doses or a booster (Pfizer and Moderna).

*The Pfizer vaccine is currently the only available option for those ages 12 to 17.

** A person is considered fully vaccinated after the primary series. However, you are considered up to date on your vaccinations if you receive a booster.

^ An 8-week interval may be optimal for some people ages 12 years and older, especially for males ages 12 to 39 years. A shorter interval (3 weeks for Pfizer-BioNTech; 4 weeks for Moderna) between the first and second doses remains the recommended interval for: people who are moderately or severely immunocompromised; adults ages 65 years and older; and others who need rapid protection due to increased concern about community transmission or risk of severe disease.



Path to COVID-19 vaccination

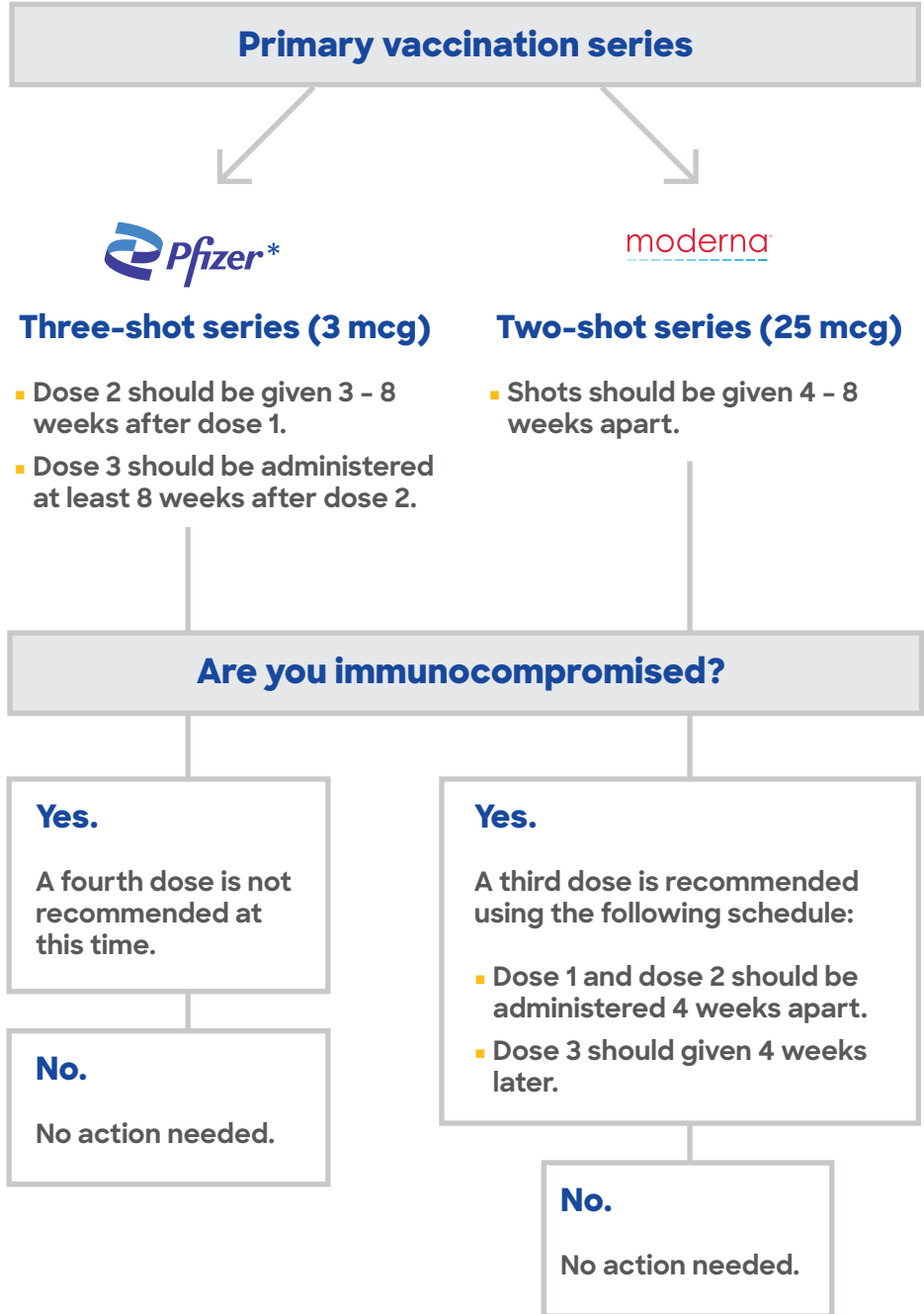
For Ages 6 months to 4 years

For questions about the vaccine or to schedule an appointment, please call our vaccine line at 1.844.BSW.VACC.

You can also schedule an appointment on [MyBSWHealth.com](https://www.mybswhealth.com) or on the MyBSWHealth app.

If the minor has a birthday in between doses, the dose given would be the dose appropriate for the age they are at the time of the dose.

The same COVID-19 vaccine product should be used for all doses of the primary series and are not interchangeable.



Path to COVID-19 vaccination

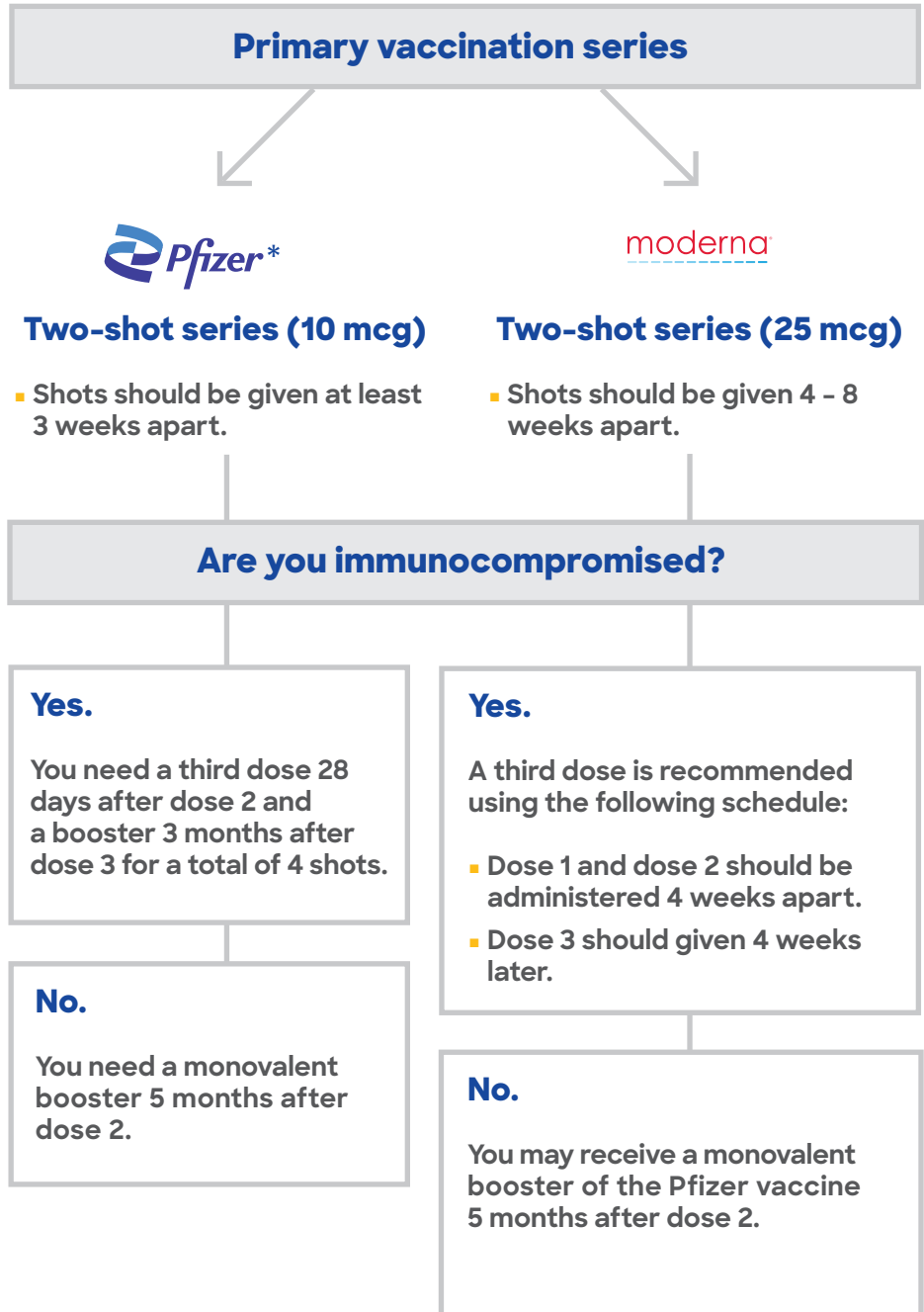
For Age 5 years

For questions about the vaccine or to schedule an appointment, please call our vaccine line at 1.844.BSW.VACC.

You can also schedule an appointment on [MyBSWHealth.com](https://www.mybswhealth.com) or on the MyBSWHealth app.

If the minor has a birthday in between doses, the dose given would be the dose appropriate for the age they are at the time of the dose.

The same COVID-19 vaccine product should be used for all doses of the primary series and are not interchangeable.



Path to COVID-19 vaccination

For Ages
6 - 11 years

For questions about the vaccine or to schedule an appointment, please call our vaccine line at 1.844.BSW.VACC.

You can also schedule an appointment on MyBSWHealth.com or on the MyBSWHealth app.

If the minor has a birthday in between doses, the dose given would be the dose appropriate for the age they are at the time of the dose.

